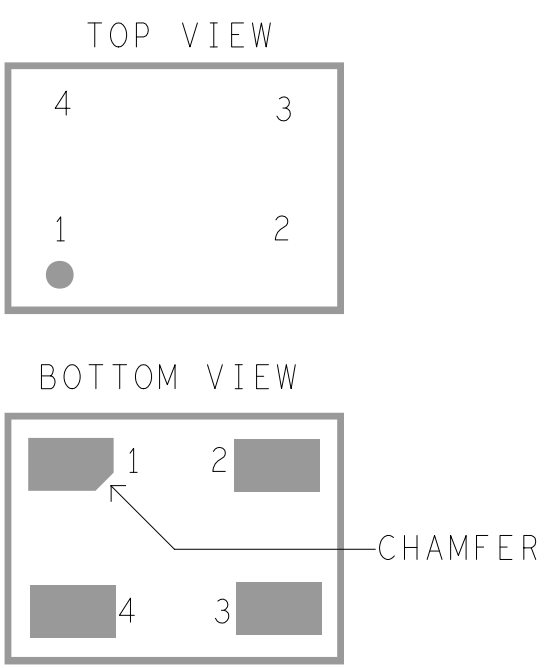


REVISIONS			
REV	DESCRIPTION	DATE	APPROVED
A	INITIAL RELEASE	26APR22	Z. ARCEO
B	CHANGES AS PER ECR-114721	05JUN23	R. EUSTACIO
C	CHANGES AS PER ECR-115639	31JUL23	R. EUSTACIO

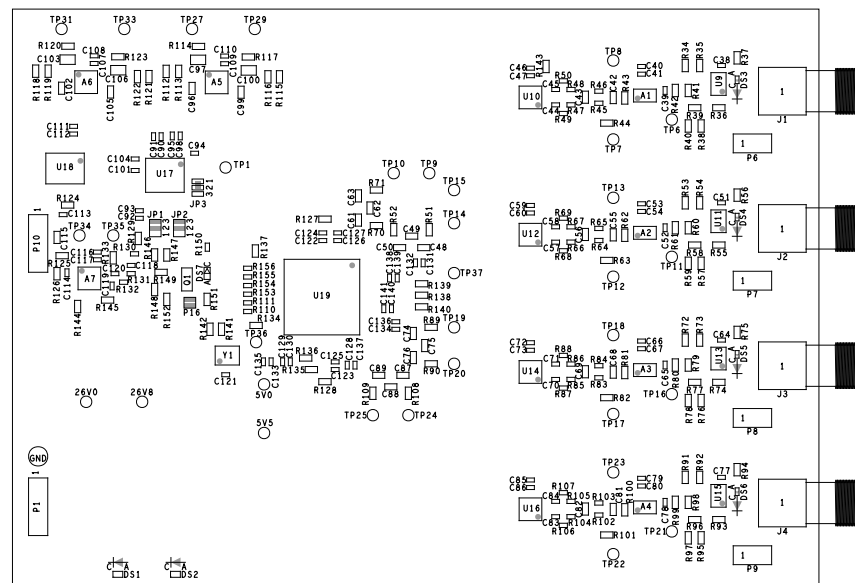
ASSEMBLY NOTES:


- BOARD ACCEPTABILITY PER ANALOG DEVICES, INC. SPECIFICATION TST00119 (LATEST REVISION).
- REPAIRS PER IPC-7711/21(LATEST REVISION) ARE ALLOWED.
- REPAIRS ARE NOT ALLOWED IN SOLDERMASK FREE AREAS ON EITHER SIDE OF THE BOARD.
- RoHS COMPLIANCE: ASSEMBLY VENDOR SHOULD ASSURE COMPLIANCE WITH LEAD-FREE AND RoHS PCB ASSEMBLY STANDARDS (EU RoHS DIRECTIVE 2002/95/EC).
- SINGULATE BOARDS AFTER ASSEMBLY PROCESS.
- SMOOTHEN EDGES AND FREE FROM BURRS AFTER DEPANELIZATION PROCESS.
- INSTALL JUMPER SHUNTS(M036050) ON PIN 1&2 FOR:
P1, P10
- SHORT PINS 1&2 USING SOLDER BLOB FOR:
TOP : P16
BOTTOM : P2, P3 , P4 , P5, P17, P18, P19, P20
SHORT PINS 2&3 USING SOLDER BLOB FOR:
JP1, JP2 AND JP3.

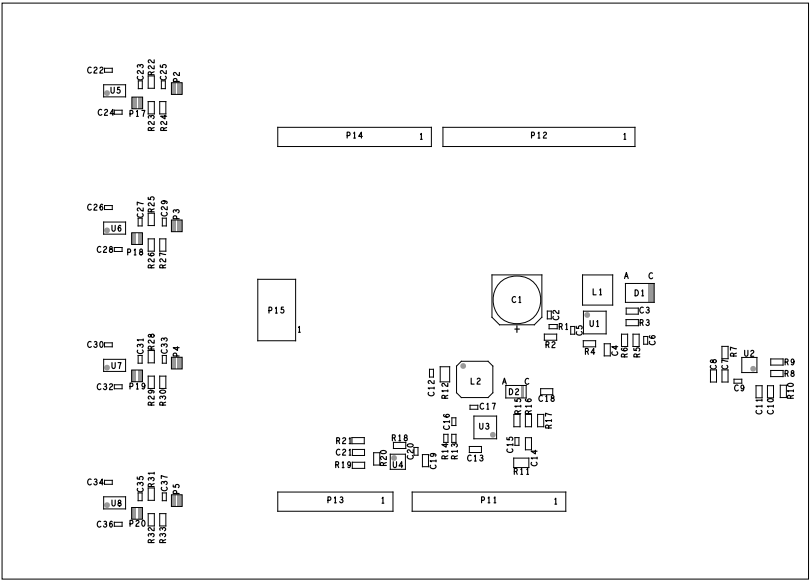
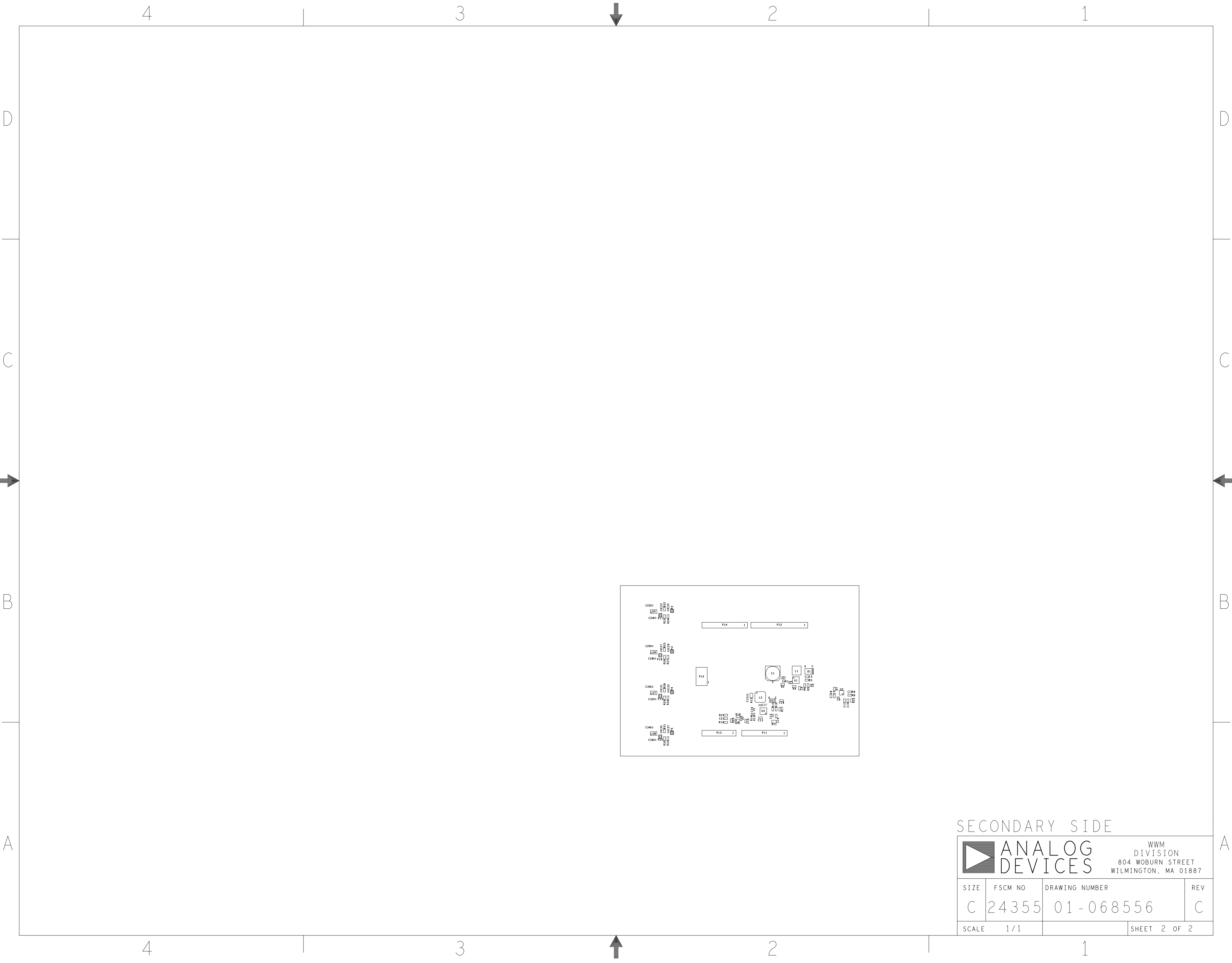


YAML126W98H31-ASSY-DETAIL

DETAIL A

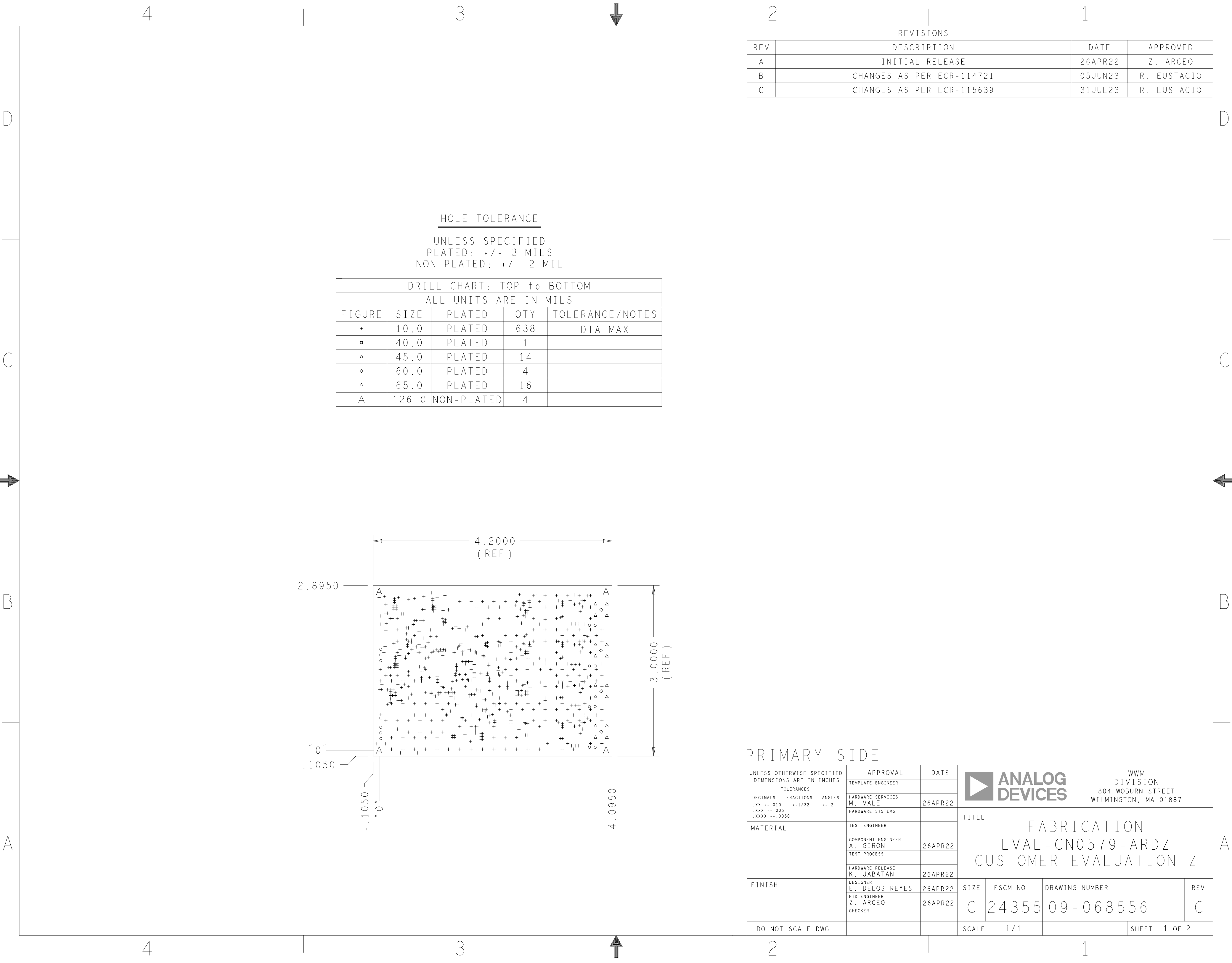


PRIMARY SIDE			
UNLESS OTHERWISE SPECIFIED DIMENSIONS ARE IN INCHES TOLERANCES DECIMALS FRACTIONS ANGLES .XX -.010 +-1/32 +- 2 .XXX -.005 .XXXX -.0050	APPROVAL	DATE	<div> ANALOG DEVICES</div> <div>WWM DIVISION 804 WOBURN STREET WILMINGTON, MA 01887</div>
	TEMPLATE ENGINEER		
	HARDWARE SERVICES M. VALE	26APR22	
	HARDWARE SYSTEMS		
MATERIAL	TEST ENGINEER		TITLE ASSEMBLY EVAL-CN0579-ARDZ CUSTOMER EVALUATION Z
	COMPONENT ENGINEER A. GIRON	26APR22	
	TEST PROCESS		
	HARDWARE RELEASE K. JABATAN	26APR22	
FINISH	DESIGNER E. DELOS REYES	26APR22	SIZE C
	PTD ENGINEER Z. ARCEO	26APR22	
	CHECKER		
DO NOT SCALE DWG			SCALE 1/1
			FSCM NO 24355
			DRAWING NUMBER 01-068556
			REV C
			SHEET 1 OF 2



SECONDARY SIDE

<div><div><div></div></div><div><div>ANALOG</div><div>DEVICES</div></div><div><div>WWM</div><div>DIVISION</div><div>804 WOBURN STREET</div><div>WILMINGTON, MA 01887</div></div></div>			
SIZE	FSCM NO	DRAWING NUMBER	REV
C	24355	01-068556	C
SCALE	1 / 1	SHEET 2 OF 2	



REVISIONS			
REV	DESCRIPTION	DATE	APPROVED
A	INITIAL RELEASE	26APR22	Z. ARCEO
B	CHANGES AS PER ECR-114721	05JUN23	R. EUSTACIO
C	CHANGES AS PER ECR-115639	31JUL23	R. EUSTACIO

HOLE TOLERANCE
UNLESS SPECIFIED
PLATED: +/- 3 MILS
NON PLATED: +/- 2 MIL

DRILL CHART: TOP to BOTTOM				
ALL UNITS ARE IN MILS				
FIGURE	SIZE	PLATED	QTY	TOLERANCE/NOTES
+	10.0	PLATED	638	DIA MAX
▣	40.0	PLATED	1	
◦	45.0	PLATED	14	
◇	60.0	PLATED	4	
△	65.0	PLATED	16	
A	126.0	NON-PLATED	4	

PRIMARY SIDE			UNLESS OTHERWISE SPECIFIED DIMENSIONS ARE IN INCHES			
			TOLERANCES			
			DECIMALS	FRACTIONS	ANGLES	
			.XX	--.010	--1/32	-- 2
			.XXX	--.005		
			.XXX	--.0050		
			APPROVAL			
			TEMPLATE ENGINEER		DATE	
			HARDWARE SERVICES		26APR22	
			HARDWARE SYSTEMS			
			TEST ENGINEER			
			COMPONENT ENGINEER		26APR22	
			A. GIRON			
			TEST PROCESS			
			HARDWARE RELEASE		26APR22	
			K. JABATAN			
			DESIGNER		26APR22	
			E. DELOS REYES			
			PTD ENGINEER		26APR22	
			Z. ARCEO			
			CHECKER			
			TITLE			
			FABRICATION			
			EVAL-CN0579-ARDZ			
			CUSTOMER EVALUATION Z			
			SIZE	FSCM NO	DRAWING NUMBER	REV
			C	24355	09-068556	C
			DO NOT SCALE DWG			
			SCALE		1 / 1	SHEET 1 OF 2

4

3

2

1

D

C

B

A

SPECIFICATIONS:

MATERIALS;

MATERIAL FAMILY;

CLADDING;

SOLDER MASK;

SILK SCREEN;

SURFACE FINISH;

INTENTIONAL SHORTS;

TEST REQUIREMENTS;

ALL LAMINATES AND BONDING MATERIALS SHOULD BE SELECTED FROM IPC-4101 OR IPC-4103, MINIMUM Tg>170degC, Td>300degC, U.L. RATING OF 94 V-0

ISOLA370HR OR S1000-2 OR IT180 OR EQUIVALENT

EXTERNAL LAYERS .5 OZ. COPPER, OVERPLATE TO 1.5 OZ.
~~INTERNAL SIGNAL LAYERS .5 OZ. COPPER.~~
INTERNAL PLANE LAYERS 1 OZ. COPPER.

NOTE: IF THE LAYER STACKUP CONFLICTS WITH THE ABOVE CLADDING SPECIFICATIONS THEN THE LAYER STACKUP SHALL TAKE PRECEDENCE.

SHALL BE LIQUID PHOTOIMAGEABLE (LPI) APPLIED ON BOTH SIDES OVER BARE COPPER OR GOLD AND SHALL MEET IPC-SM-840 (LATEST REV.) CLASS 3. COLOR GREEN.

SHALL BE PERMANENT NON-CONDUCTIVE EPOXY INK, COLOR: WHITE
SYNTHETIC INKJET PRINTING ALLOWED FOR DENSE BOARDS, COLOR: WHITE

ENIG (ELECTROLESS NICKEL/IMMERSION GOLD)
PER IPC-4552 LATEST REVISION

IF SUPPLIED DATA INCLUDES A FILE "READ_ME.2", THEN INTENTIONAL NET SHORTS EXIST. CUSTOMER REVIEW AND APPROVAL IS REQUIRED IF SUPPLIED DATA REPORTS ANY CONDITION THAT DOES NOT MATCH "READ_ME.2" FILE PROVIDED.

100% NETLIST ELECTRICAL VERIFICATION USING CUSTOMER SUPPLIED IPC-D-356 NETLIST FOR OPENS AND SHORTS WHEN "GERBER DATA" IS PROVIDED. THIS VERIFICATION ALSO REQUIRED FOR "ODB++" DATA PER EMBEDDED NETLIST.

4 LAYER STACKUP

NOMINAL
FINISHED
BOARD
THICKNESS
0.062"
+/- 10%

PRIMARY SILKSCREEN

PRIMARY SOLDER MASK

PRIMARY SIDE (LAYER 1)

L2_GND PLANE (LAYER 2)

L3_PWR PLANE (LAYER 3)

SECONDARY SIDE (LAYER 4)

SECONDARY SOLDER MASK

SECONDARY SILKSCREEN

REQUIREMENTS:

1. REFER TO IPC-6010 SERIES (LATEST REV.), CLASS 2 FOR FABRICATION UNLESS OTHERWISE SPECIFIED.

2. ACCEPTABILITY PER ANALOG DEVICES, INC. SPECIFICATION TST00115, (LATEST REVISION.)

3. MODIFICATIONS TO THE ARTWORK ARE NOT ALLOWED WITHOUT WRITTEN AUTHORIZATION.

4. HOLE PATTERN TOLERANCES FOR UNDIMENSIONED HOLES SHALL BE A DIAMETER OF 0.005 INCHES FROM THEIR TRUE POSITION.

5. PLATED HOLE WALL THICKNESS SHALL NOT BE LESS THAN 0.001 INCH MINIMUM AVERAGE, WITH NO READING LESS THAN .0008 INCH BY CROSS SECTION.

6. HOLE DIAMETERS APPLY AFTER PLATING.

7. FINISHED CONDUCTOR WIDTHS SHALL NOT BE REDUCED FROM THE NOMINAL INDICATED ON THE MASTER PATTERN, BY MORE THAN THE CONDUCTOR THICKNESS.

8. MINIMUM DESIGN LINE WIDTH IS .008 INCH.

9. MINIMUM DESIGN SPACING IS .005 INCH.

~~10. NON-FUNCTIONAL PAD REMOVAL FROM INNER SIGNAL LAYERS MAY BE PERFORMED AFTER CUSTOMER APPROVAL.~~

11. IF PAD SIZES PROVIDED ARE NOT LARGE ENOUGH TO MAINTAIN ANNULAR RING REQUIREMENT, MFR. MAY REQUEST APPROVAL TO TEAR DROP PADS TO MAINTAIN ANNULAR RING. (AT PAD TO TRACE INTERSECTION ONLY AND ELECTRICAL INTEGRITY MUST BE MAINTAINED.)

12. THIEVING MAY BE ADDED TO COMPENSATE FOR LOW COPPER DENSITY AREAS ON THIS DESIGN ONLY AFTER REVIEW AND APPROVAL FROM THE CUSTOMER:

A. THIEVING TO CARD EDGE, FIDUCIALS, NON-PLATED THROUGH HOLES, ALL OTHER FEATURES TO BE 0.200 INCH MINIMUM.

B. THERE SHALL BE NO THIEVING IN ANY AREAS FREE OF SOLDER MASK OR INTERNAL COPPER PLANES.

13. MFR. TO LEGIBLY ETCH OR STAMP/SCREEN WITH PERMANENT NON-CONDUCTIVE INK ON SECONDARY SIDE IN A CLEAR AREA UNLESS OTHERWISE INDICATED;

A. U.L. CODE-FLAMMABILITY RATING

B. DATE CODE (STAMP).

C. LOT NUMBER

D. MFR LOGO

E. SUCCESSFUL ELECTRICAL TEST.

14. REPAIRS PER IPC-7711/21 (LATEST REV.) ARE ALLOWED.

15. BOARDS TO BE SHIPPED IN ARRAYS AND KEEP INTACT.
PANEL TO BE SUBJECTED TO CUSTOMER'S APPROVAL.
PANELED SOLDER PASTE STENCIL SHOULD BE SENT TO THE CUSTOMER.

PRIMARY SIDE

ANALOG
DEVICES

WWM
DIVISION
804 WOBURN STREET
WILMINGTON, MA 01887

SIZE

FSCM NO

DRAWING NUMBER

REV

C

24355

09-068556

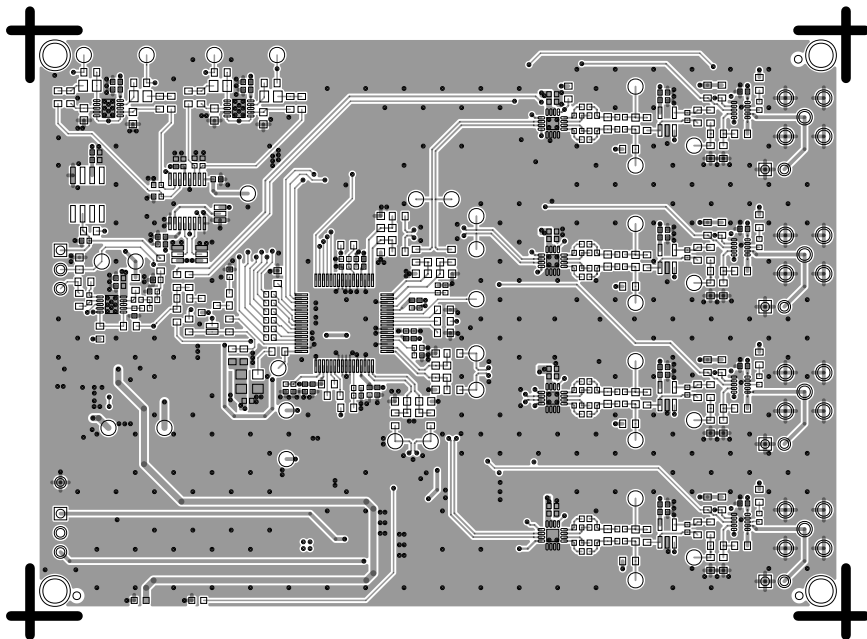
C

SCALE

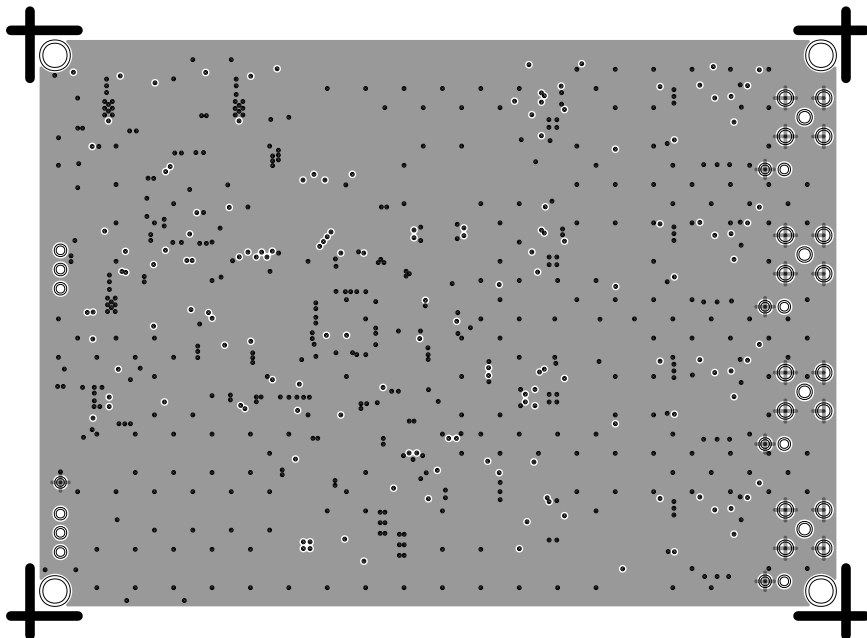
1 / 1

SHEET 2 OF 2

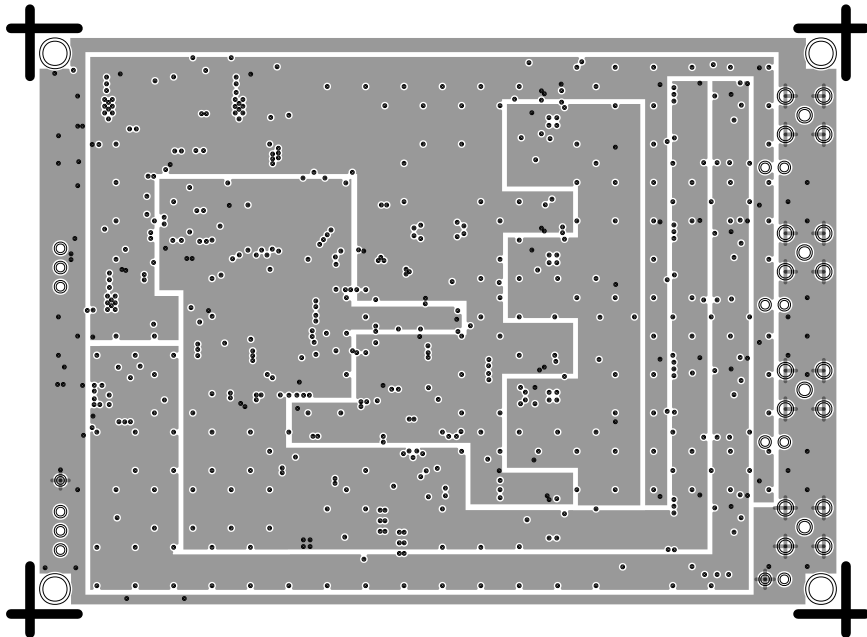
L1 PRIMARY
08-068556-01
REV C



L2 GND
08-068556-07
REV C



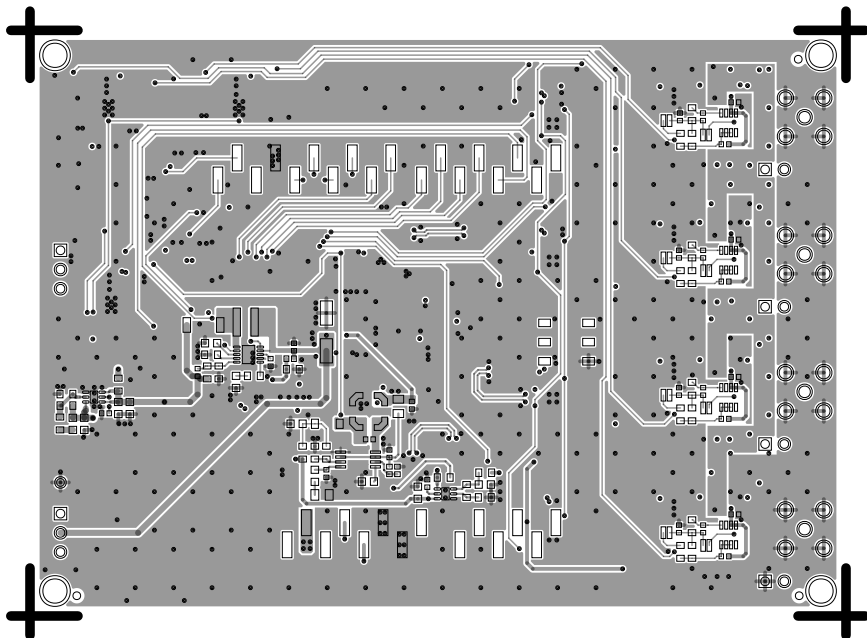
L3 PWR
08-068556-08
REV C



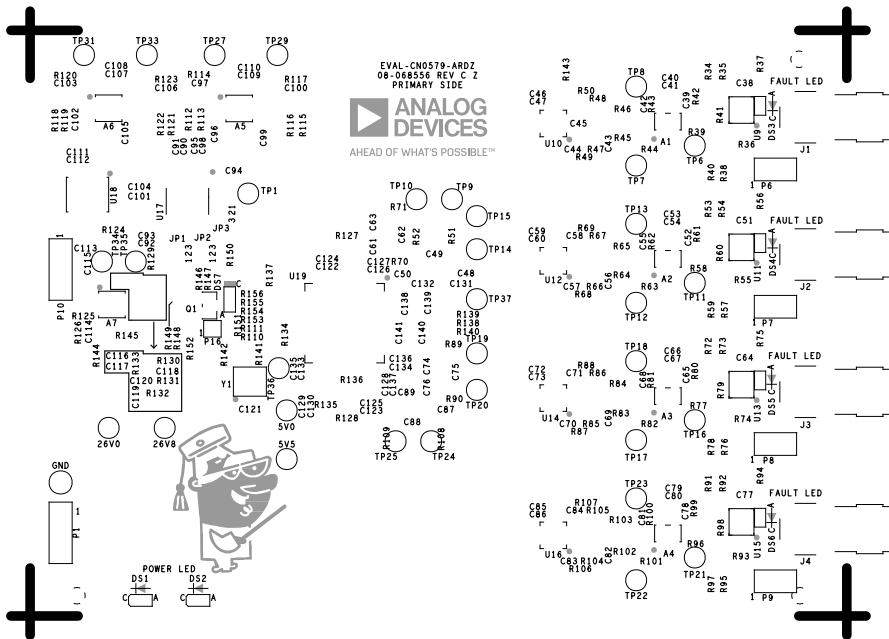
L4 SECONDARY

08-068556-02

REV C



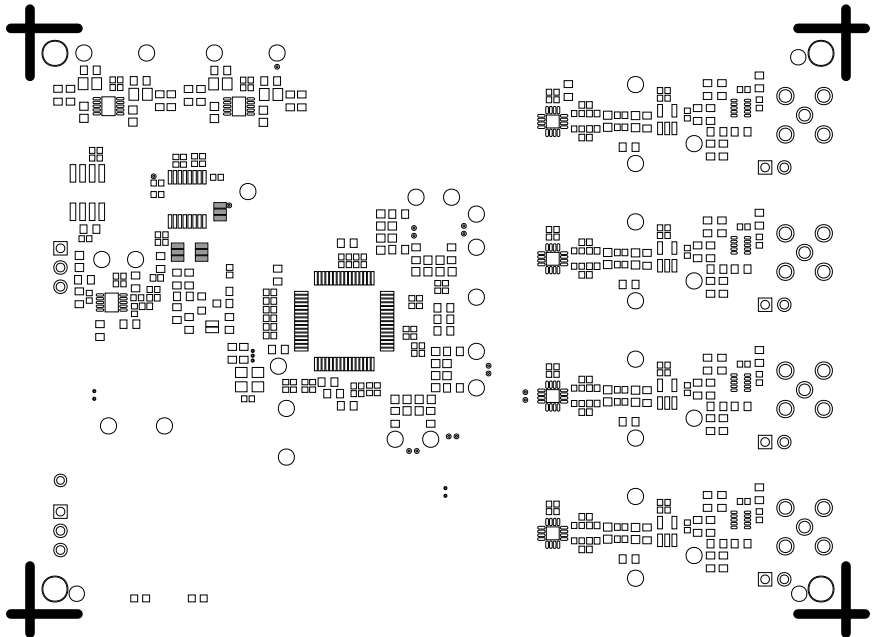
REV C



SOLDERMASK PRIMARY

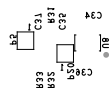
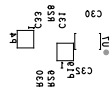
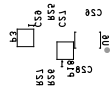
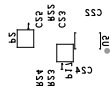
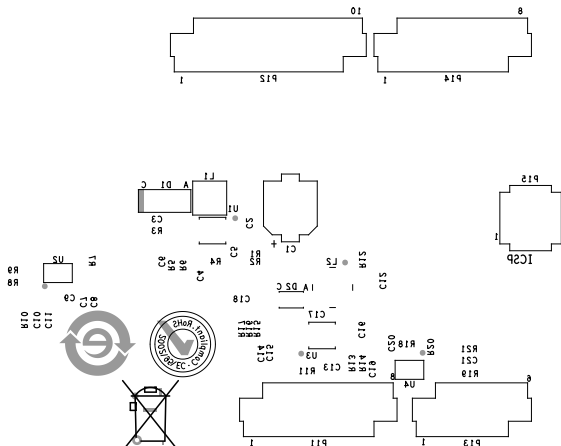
08-068556-04

REV C



REV C

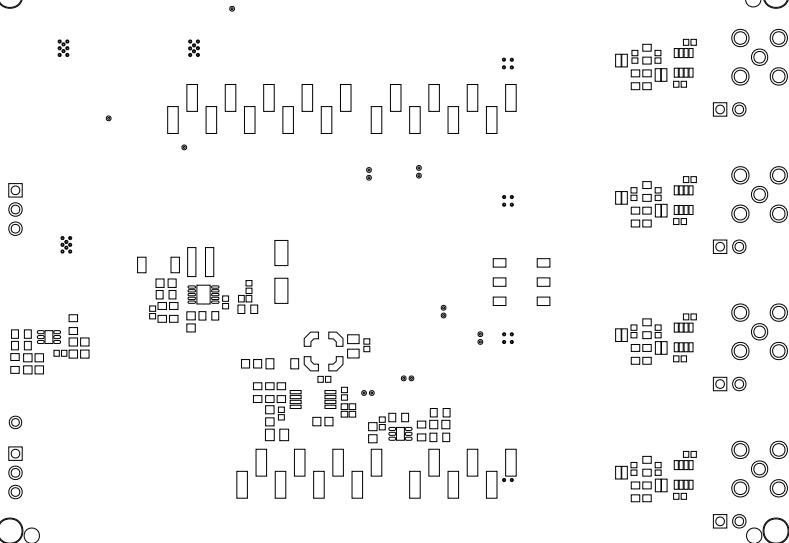
SECONDARY SIDE
08-068256 REV C 2
EVAL-CN0279-ARDZ



SOLDERMASK SECONDARY

08-068556-06

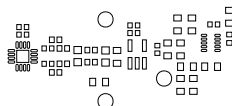
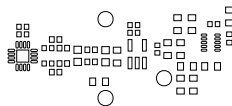
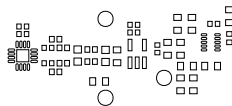
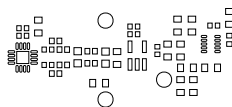
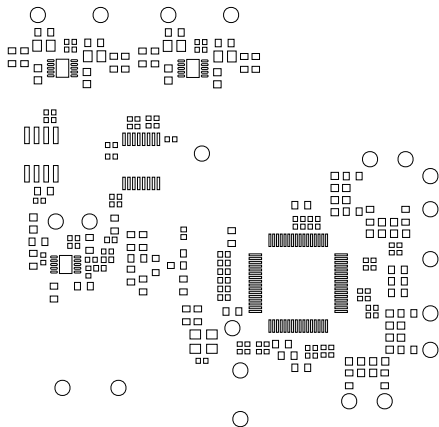
REV C



PASTEMASK PRIMARY

08-068556-09

REV C



□ □ □ □

PASTEMASK SECONDARY

08-068556-10

REV C

